

Shower & Bath Enclosure Installation Instructions

Thank you for purchasing Heirloom shower/bath enclosure from A.H. Furnico, Inc. We are committed to providing our customers with high quality products at a competitive price.

Please read all instructions carefully before and during installation.

Professional help is required for installation.

These installation instructions should be used as a guideline. Your specific shower or bath enclosure may differ from the figures shown in these instructions.

Additional Installation

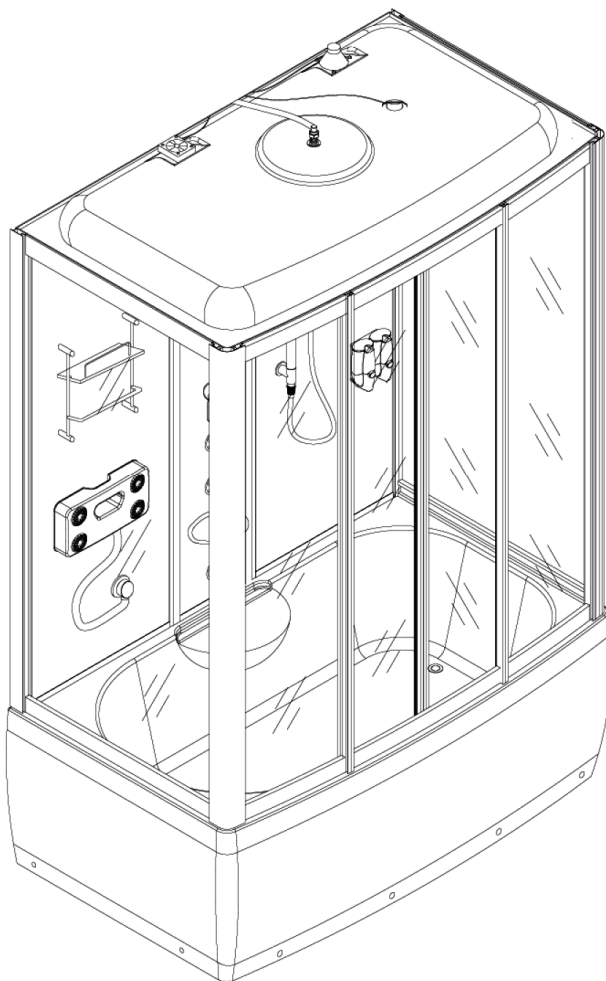
Tools:

3" Dry wall screws
Silicone sealant
Phillips head screw driver
Flat head screw driver

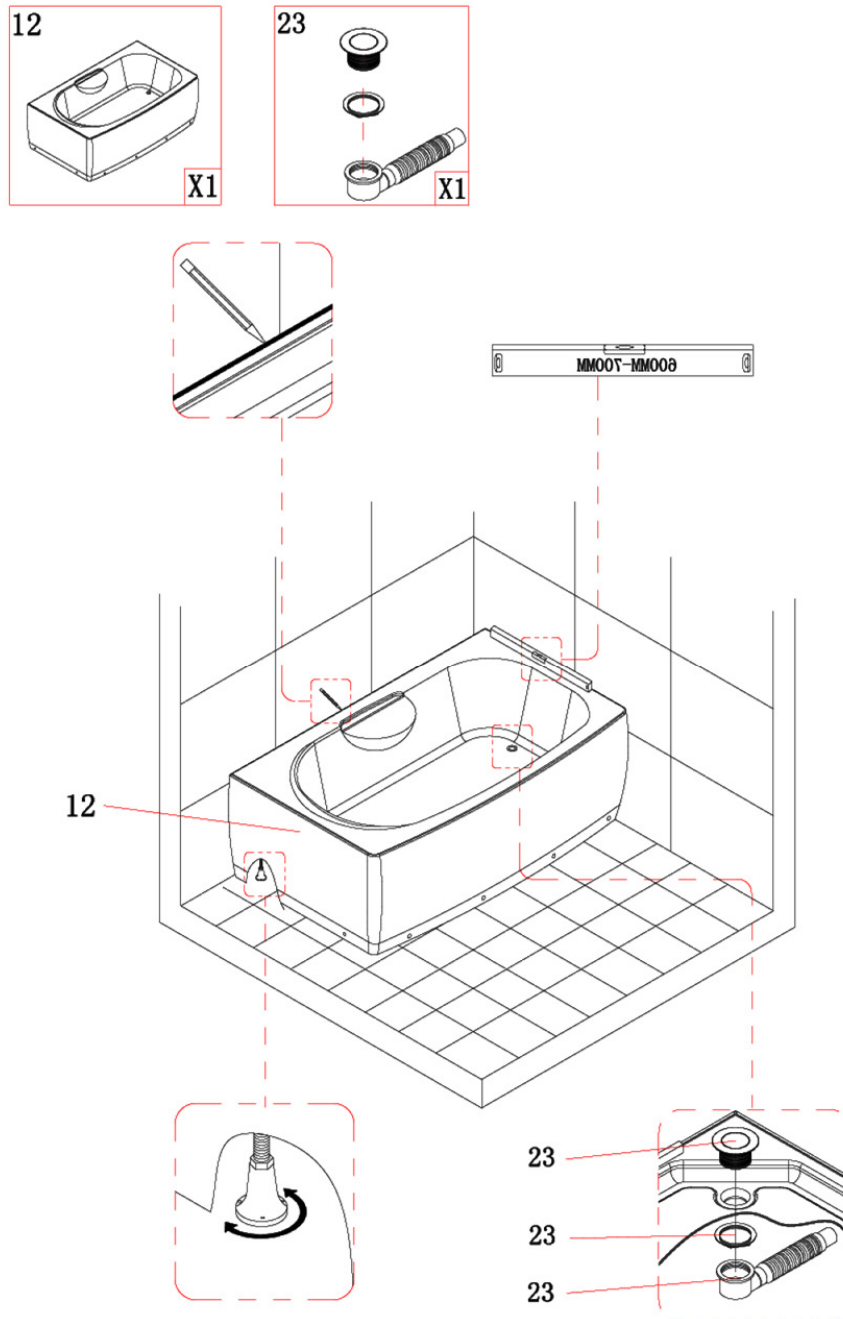
1. Pre-installation

Check the area you want to install your unit for the following:

- a. Water hook-ups
- b. Floor drain
- c. Wall studs. Measure the area to ensure that once the unit is installed, the screw holes located at the top of the enclosure walls will align with a wall stud.
- d. 120V outlet, if your unit has a built-in radio

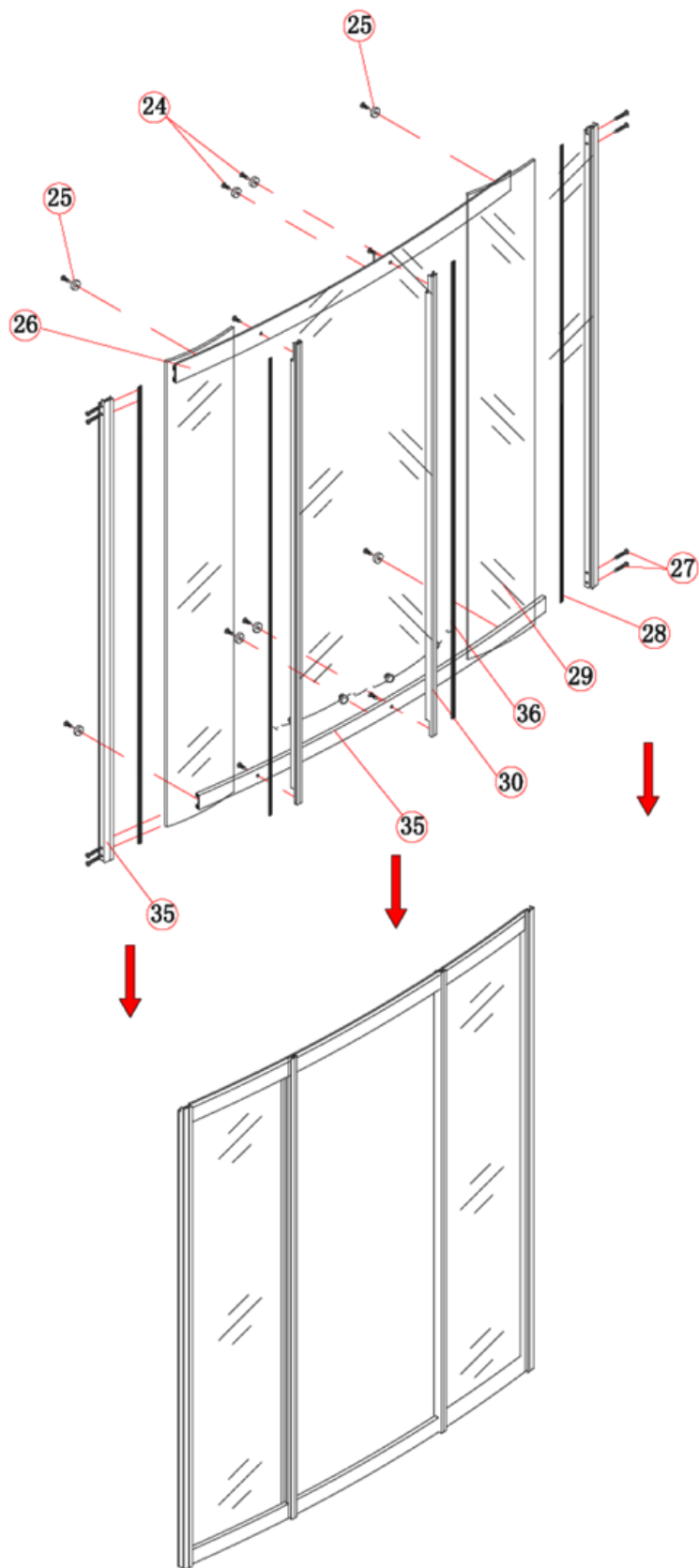


- a. Remove the shower base or bath tub from its packaging.
- b. Remove all protective covering from the base.
- c. Adjust the feet of the base so that the base is level when lying flat on the ground. If you are installing a corner shower unit, adjust the feet so that the front feet are ¼” higher than the back ones so that the water will flow towards the drain.
- d. Remove the plastic tubing and unscrew the top from the white plastic drain.
- e. Place the top portion into the drain hole in your base.
- f. Apply silicone sealant to the bottom portion of the white plastic drain (about ¼” from the edge of the rim) and place it over the drain hole from the underside of the base.
- g. Screw the top of the plastic drain into the bottom until tight. Do not over tighten as this may crack the plastic.
- h. Reattach the plastic piping to the plastic drain.
- i. Extend the piping and feed it into the floor drain.



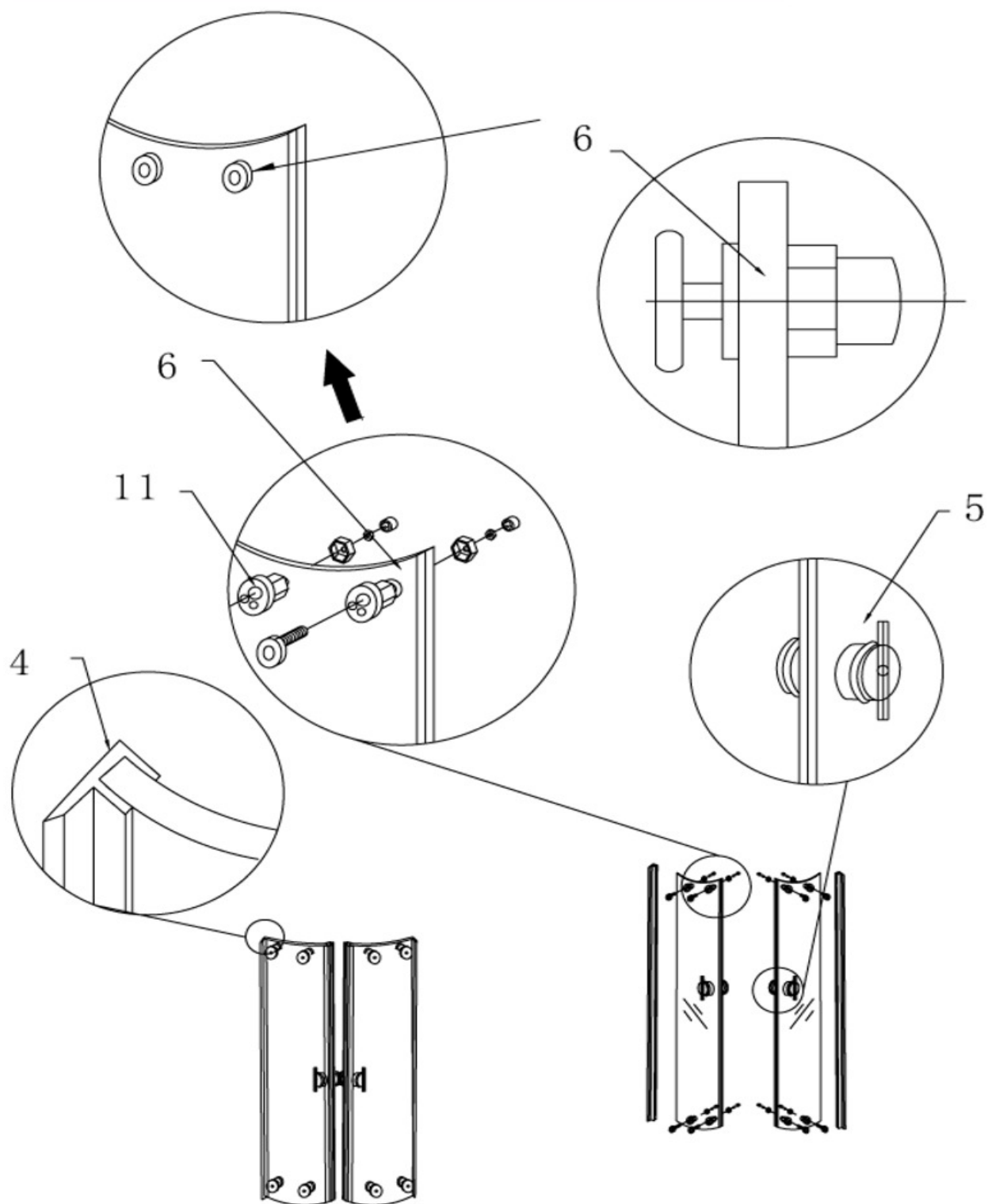
4. Front Fixed Glass Panel Installation

Front fixed glass panels installation illustration.



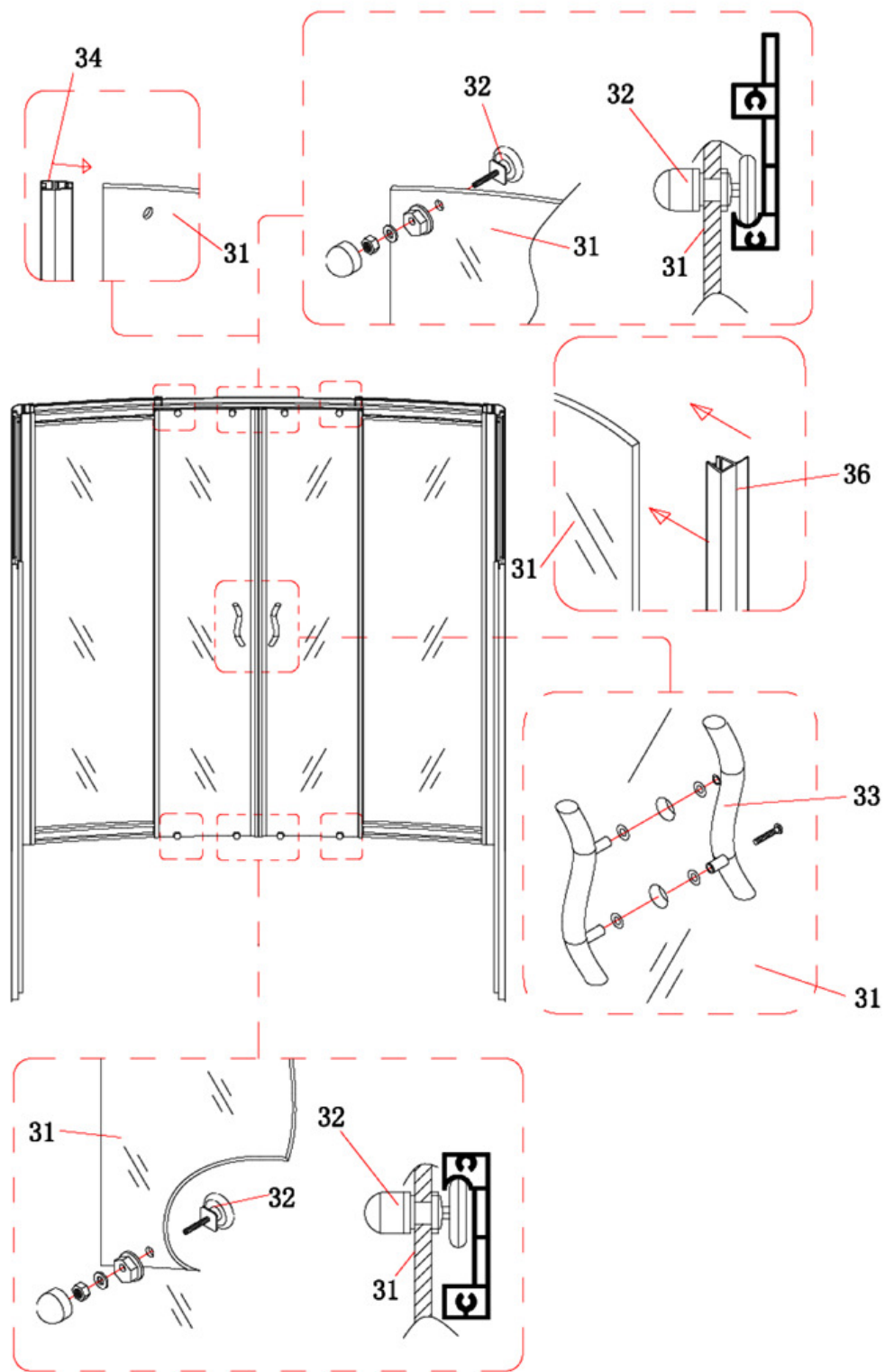
5. Front Glass Door Installation

Install door rollers and water seal strips as shown by the illustration.

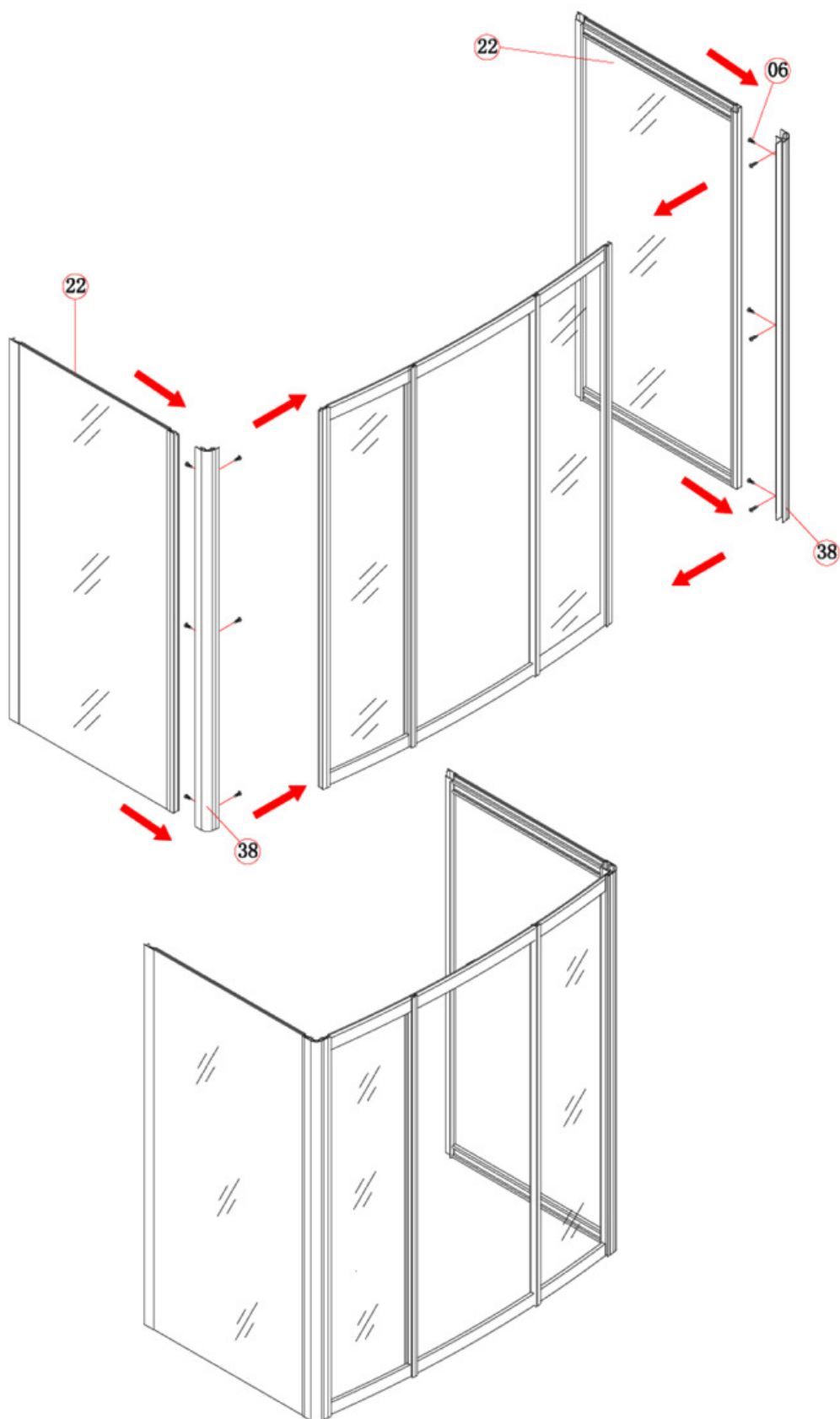


6. Glass Sliding Door Installation to Fixed Glass Frame

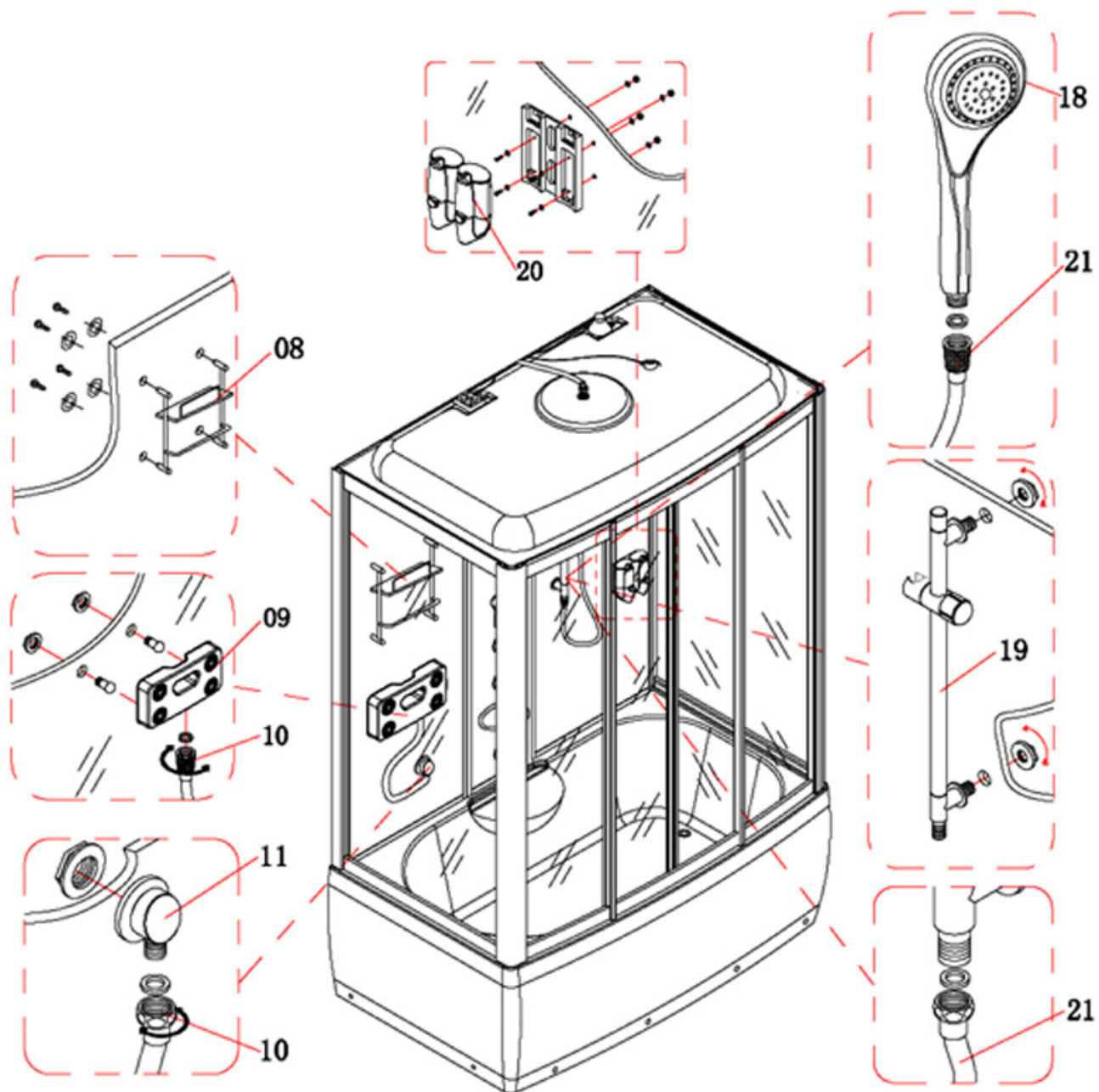
Install sliding glass door to the rails as shown by the illustration.



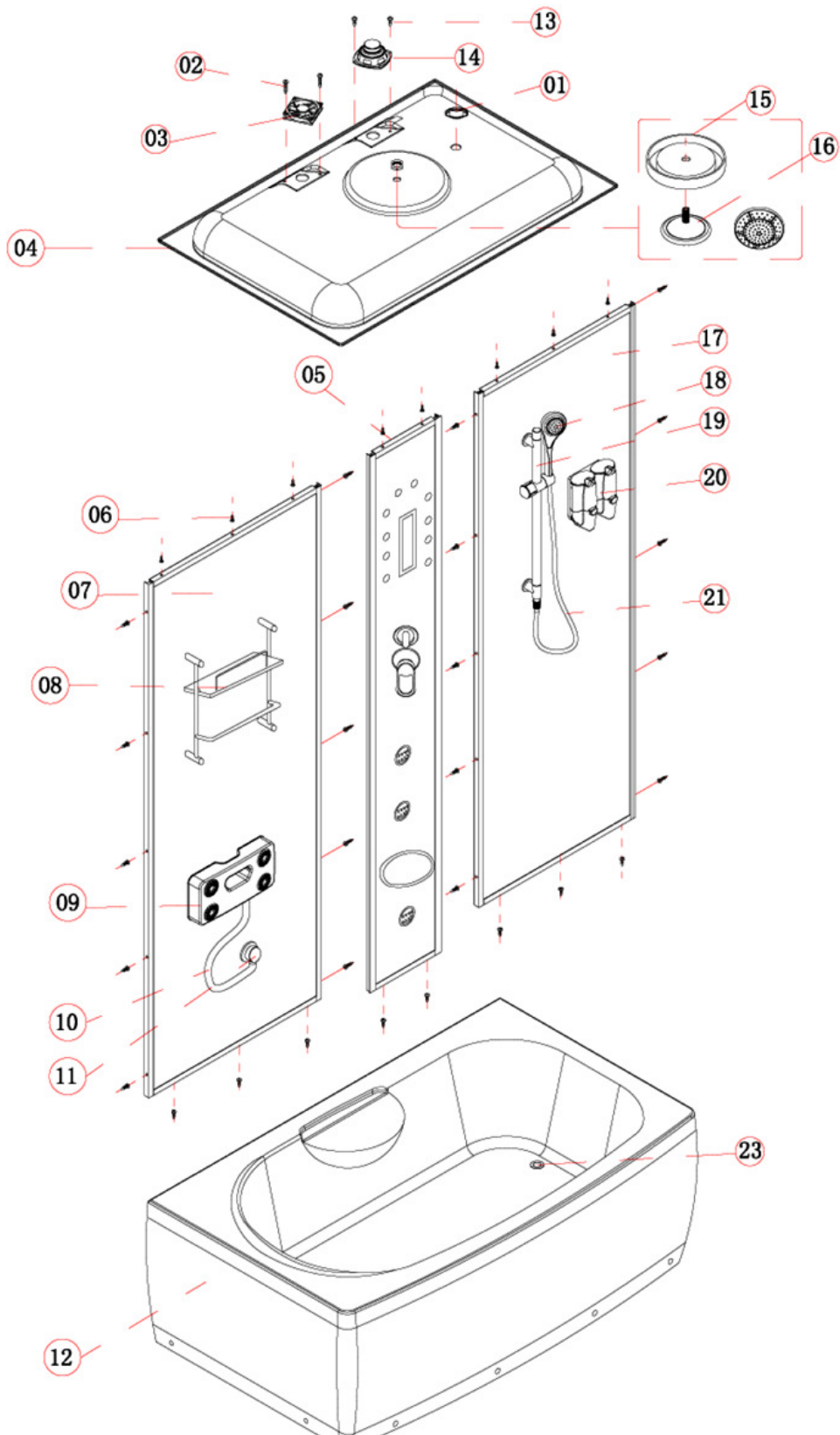
7. Side Panel Installation



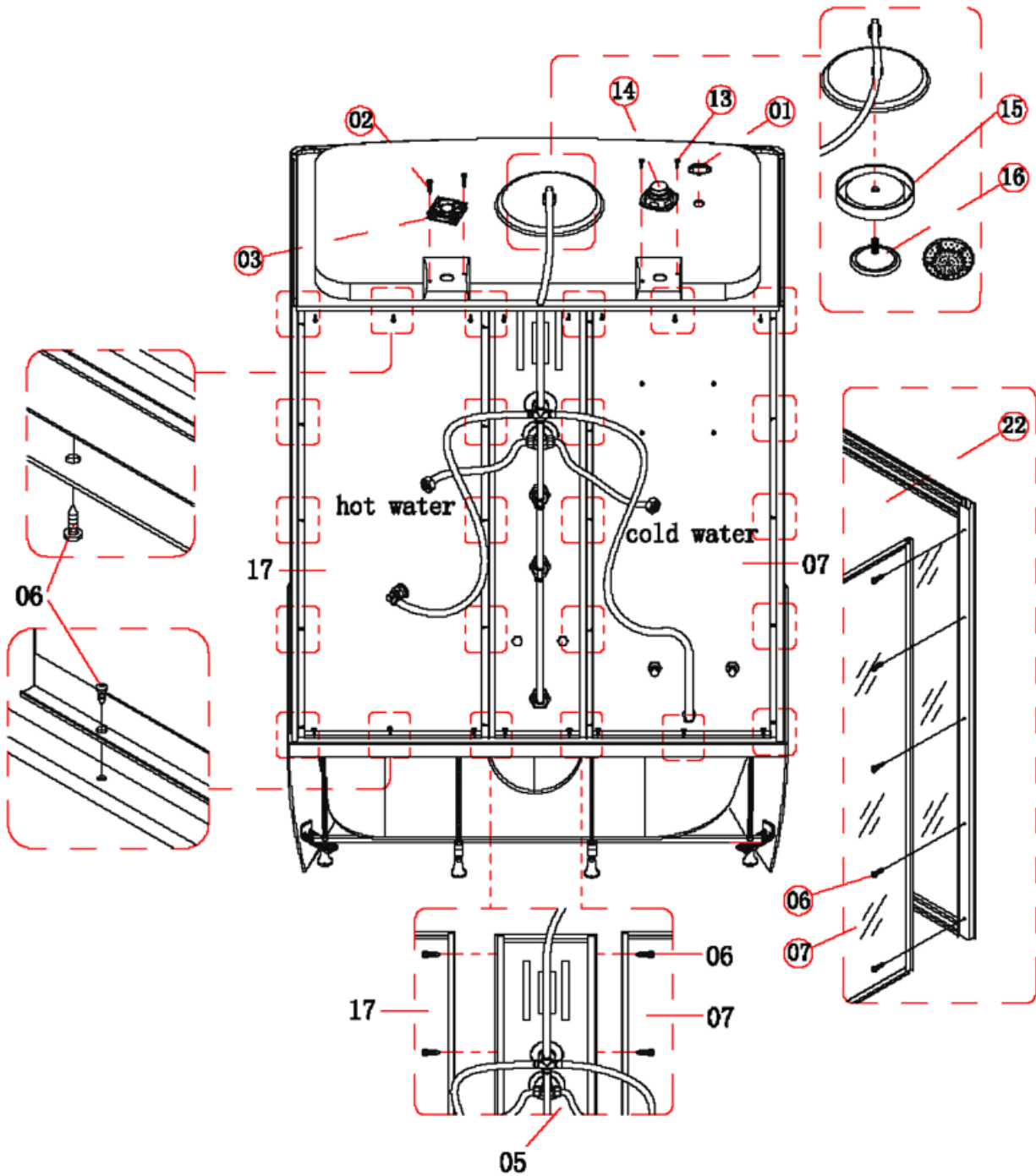
8. Dispenser and Rack Installation



9. Back Panel and Roof Installation



10. Water Supply and Power Installation



11. Unit installation

- a. Connect and secure all water lines to the shower/bath enclosure. If your unit comes with a built-in radio, plug it into a 120V outlet.
- b. Verify that the plastic piping is still fed into the floor drain.
- c. Carefully slide the unit into the wall until it is pressed flush and snug against the wall. **OPTION:** You may apply silicone sealant to the outer edge of the base to secure the unit to the wall.
- d. Once the unit is in place, secure the unit to the wall using the 3” dry wall screws. Place the dry wall screws through the holes located at the top of the enclosure walls. The screws **MUST** be screwed into a stud. If a stud is not available, insert a stud extender.

12. Caulking

All seams must be sealed